

A large red circle is centered on the page, serving as a background for the title text.

WiFi NVR Kits

Quick Start Guide

Please read the Quick Start Guide carefully before using the product and keep it.
Related tools and documents of products, please download from www.herospeed.net.

Declaration

Thank you for purchasing our products, if you have any questions or requires, please contact us. This user manual is for wifi NVR Kits(wireless NVR&wireless cameras). It will be updated subject to product's updating; new version will be not noticed specifically.

If this manual's any products description not accord with the real products, please in kind prevail.

Safety Precautions

1. Please modify default password promptly after the equipment is installed, to avoid being stolen.
2. Please do not place and install the equipment in direct sunlight or near heating equipment.
3. Please do not install the equipment in wet, dusty or soot-burning places.
4. Please keep the NVR level installed, or install it in a stable place, and take care to prevent the product from falling.
5. Do not drop or splash liquid onto the NVR and ensure that no liquid-filled items are placed on the device to prevent liquid from flowing into the device.
6. Please install the equipment in a well-ventilated place and do not block the vents of the equipment.
7. Please use the equipment within rated input/output range only.
8. Please do not disassemble the equipment without notifying supplier.
9. Please transport, use and reserve the equipment in permissible range of humidity and temperature.

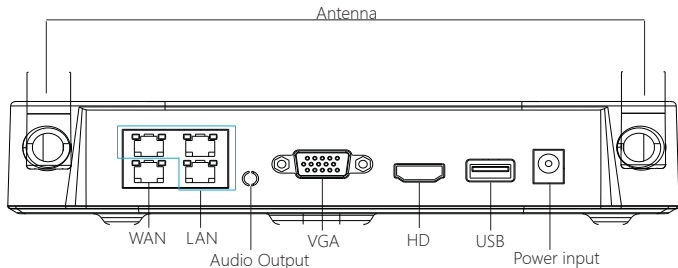
Disclaimer

Please pay special attention to the following exclusions or restrictions:

1. If the product is terminated for any of the following reasons, our company shall not be liable for any personal injury or property damage to you or third parties: A. The installation or use of equipment is not strictly in accordance with the requirements; B. Maintenance of state or public interests; C. Majeure; D. Your own or third-party reasons, including but not limited to the use of third-party products, software, components and so on.
2. Our company does not guarantee the equipment for special purposes or use in any express or implied way. This equipment shall not be used for medical/safety equipment or other products which can cause life hazards and personal injury applications or dangerous uses of weapons of mass destruction, biological and chemical weapons, nuclear explosion and any unsafe use of nuclear energy or contrary to humanitarian purposes. Any loss or liability arising from such use shall be borne by yourself.
3. This equipment can perceive specific illegal invasion in correct installation and use, but it can not avoid accidents or personal injury and property loss caused by this. In daily life, please be vigilant and strengthen the awareness of safety precautions.
4. We are not liable for any consequential, accidental, special or punitive damages, requests, property losses, data losses and documents losses. In the maximum extent permitted by law, our liability for compensation shall not exceed the amount paid by you when purchasing this product.

Products Appearance Description

WAN、LAN (1、2、3)、Audio Output、VGA、HD、USB、Power input port、Antenna.



Notes: Images for instruction use only, the final goods are subjected to the real object.

WiFi NVR Kits Quick Installation Guide

This WiFi NVR Kits, no need cable, no need any set up, easy installation, plug and play, wireless communication uses automatic passwords generation mechanism to ensure that the monitored video will be not overheard under the default passwords, so please take it easy to use our system(The codes have been paired: in case the ESSID and passwords had been changed, you need to match codes first.).

1. Install HDD

Make sure all power are cut before installing. Installation tool: Cross screwdriver.

Notes: Please use the professional hard disk recommended by supplier.

(1) Unscrew the screws on the back and sides of the chassis and remove the cover.



(2) Connect one end of the hard disk power cable and data cable to the motherboard and the other end to the hard disk.



(3) Align the hard disk screw holes to the chassis backplane, and then tighten lock the screws.



(4) Install the cover and fix it by screws.

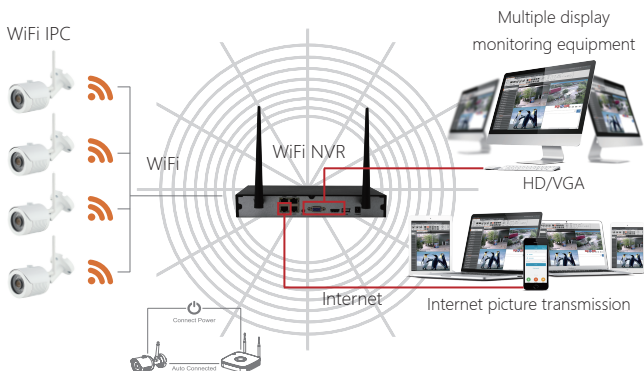


Notes: Images for instruction use only, the final goods are subjected to the real object.

2. Make sure WiFi NVR Kits working well.

Connect NVR to monitor, all devices are power on, no need any setting, auto-pair. When all the IPC videos appear on the display, the device works normally and can be installed in the next step.

Notes: Please make sure the NVR video output and monitor input have been connected. Please use the matched power supply in the package to prevent the NVR from working properly or damaging the NVR when the power supply is not working properly.



Notes: Images for instruction use only, the final goods are subjected to the real object.

3. Adjusting the Antenna:

The NVR antenna transmits signals to the surroundings. When the NVR and the IPC antenna are at the same height and parallel to each other, the effect is best. If the NVR can not be the same height, the IPC antenna should be tangent to the sphere with the center of the NVR (Figure 1, Figure 2-2). Don't let the antenna point directly at NVR (Figure 2-1), according to the figure can be placed correctly.

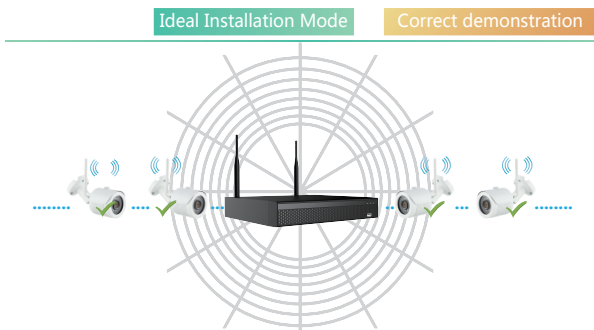


Figure 1

Not Suggested

Suggested

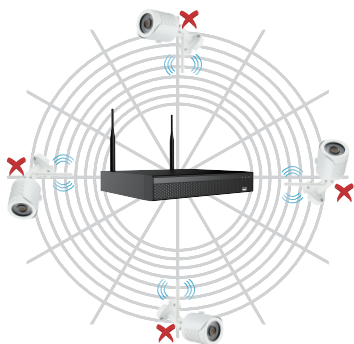


Figure 2-1

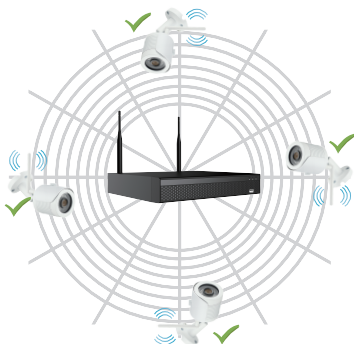


Figure 2-2


System login


Start up the NVR, right click the desktop and enter the user login interface.

Input the user name and password.

System default user name : "admin" ; default password : "12345".

User Login

 admin



English

Login

Close

[Forget password](#)

Preview

Enter preview interface after device start up. Preview interface include date and time of system, and channel name. Login system, double left click to switch between full screen and multi-screen.

Menu basic operating instructions

1. Enter menu mode

Login system, right click to popup shortcut menu.

Left click **【Menu】** , enter the main menu interface.

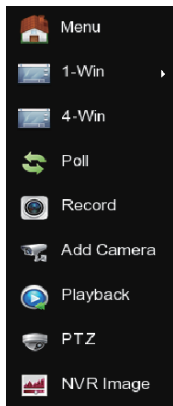
Left click **【Playback】** , enter playback operation interface.

Left click **【Record】** , enter record setting operation interface.

2. Exit menu mode

Right click to exit menu mode.

In the menu mode, right click to return to the previous menu (also for other menus).



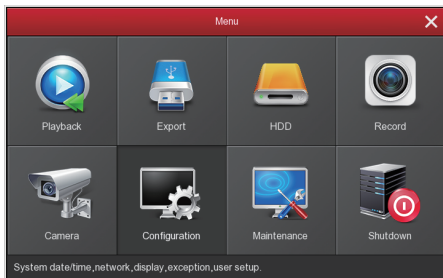
Shortcut menu introduction

Right click to popup shortcut menu, the menu consists with the following three parts:

Preview mode: Select the preview mode in the menu bar you like.

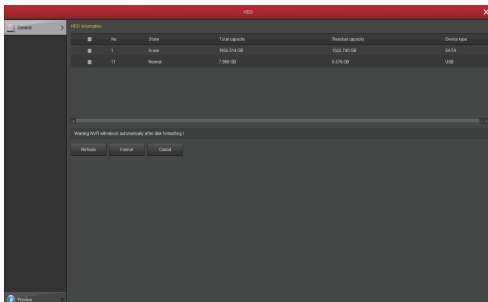
Shortcut menu mode: There are Poll, Record, Add Camera, NVR image, you can click and the enter corresponding menu directly.

Main menu:It contains **【Playback】** , **【Export】** , **【HDD】** , **【Record】** , **【Camera】** , **【Configuration】** , **【Maintenance】** , **【Shutdown】** eight parts.



Recording Setting

1. HDD formatting. Make sure the hard disk is detected and works well. (You can check status of HDD from menu "HDD")



2. Enter "Record" interface to set recording from shortcut menu "Record" or main menu "Record". Default setting is all channels are recorded 24 hours a day.



3. Motion Detection Setting, enable "Motion" to activate motion recording, motion sections have no more than 6 time periods each day. If normal record and motion record are overlapped, it can only save the motion records while motion detection comes up.



Playback

Enter "Playback" interface by clicking "Playback" from shortcut or main menu, select channels and search the record files and playback what you want.



(Video playback interface)

Notes: To promise the safety, please prohibit the SSID broadcast after the installation is finished. Enter menu "Configuration"->"Network"->"WIFI"->"Advance", and tick SSID broadcast on interface you see.

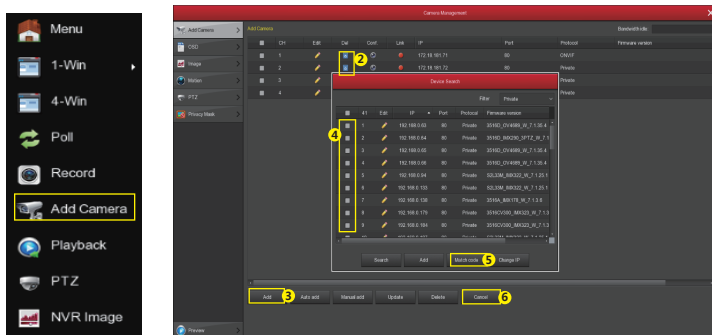
Certify mode	WPA2-PSK
SSID broadcast	<input type="checkbox"/>
Wifi format	802.11bgn
Wifi Channel	Other

Live View

1. Enter Live View interface by left clicking shortcut menu "1-win" or "4-win". It is available to add single channel or multi-channel on one screen.



2. The default wireless system has auto-paired, no need any setting. In case there is no image shown or ESSID and passwords have been changed, please pair the codes first.



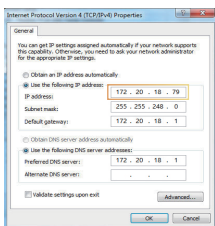
Please enter "Add Camera" to pair the codes step by step:

- ① Connect Lan port with network cable between IPC and NVR.
- ② Delete all the added devices.
- ③ Click "Add" into the Device Search interface, the interface automatically searches for and displays the search for the device.
- ④ Tick all the devices you want to add.
- ⑤ Click "Match code".
- ⑥ Click "Cancel" to return.

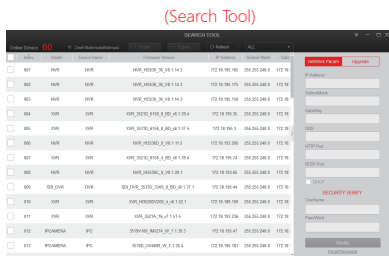
PC Side LAN Access

1. NVR login (the PC and the device are in the same router)

- ① Make sure the recorder and the connected PC(computer) are in the same segment. If not, please set IP address of your PC the same segment as the NVR's, for example "172.20.18.79", but it must be different IP as the NVR's. (Default IP address of NVR is 172.20.18.78).
- ② Open IE browser, Select Tools > Internet Options > Safety > customized.
- ③ Open "Search Tool", double-click the target device from the search result to enter the login interface, or open the IE browser to enter the NVR address: such as http://172.20.18.78/ (If the port 80 of the NVR is changed to other, you need to add the changed port) to enter the login interface.
- ④ On login interface, login NVR please (Notes: Default user: "admin",password: "12345").
- ⑤ Webpage live view for NVR.On "Live Video" interface,click "Play" icon to play video.

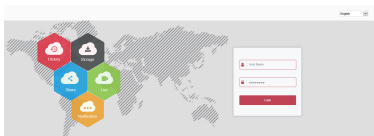


①



③

(The first connection to download and install HsVRWebplugin control)



④



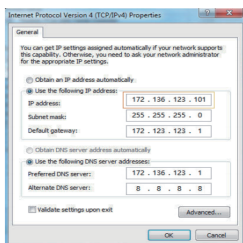
⑤-1



⑤-2

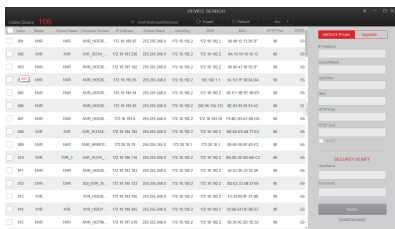
2. IPC LAN Login (the PC and the device are in the same router)

- ① Connect Lan port with network cable between your PC and IPC. Make sure the devices and the connected PC are in the same segment. If your PC has different segment, please set IP address of your PC the same segment as the device's, for example "172.136.123.11", but it must be different IP as the NVR's and IPC's. (Default IP address of IPC is 172.136.123.100~200)
- ② Open IE browser, Select Tools > Internet Options > Safety > customized.
- ③ Open "Search Tool", double-click the target device from the search result to enter the login interface, or open the IE browser to enter the IPC address: such as http://172.136.123.100/ (If the port 80 of the IPC is changed to other, you need to add the changed port) to enter the login interface, IPC address can be viewed in the NVR "Add Device".
- ④ On login interface, login IPC please. (Notes: Default user: "admin", password: "admin").
- ⑤ Webpage live view for IPC.



①

(Search Tool)

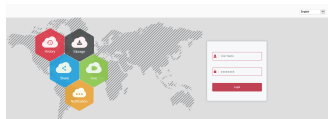


③

(The first connection to download and install HsVRWebplugin control)



④-1



④-2



⑤

Mobile App Access

Download and install FREEIP on smart phone by following way:

1. In the Android phone Google App Store or iphone App Store enter "FreeIP" search,download and install.

2. Scan the following QR codes to download and install the App.

3. Download from the following websites:

iOS App: <https://itunes.apple.com/cn/app/freeip/id898690336?mt=8>

Android App: <https://play.google.com/store/apps/details?id=com.xc.hdscreen>

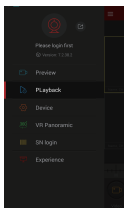


Android



ios

Open FreeIP APP(New user please register an account, FreeIP PRO account can log in directly), adding the device according to the steps as below, and preview the videos.



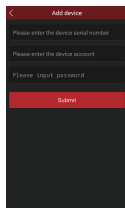
①



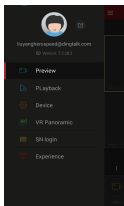
②



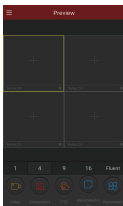
③



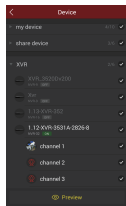
④



⑤



⑥



⑦



⑧

① Click **【Device】** to add the device.

② Click the button of the interface **【+Add device】** , select " the serial number add" into QR code scanning interface.

③ Scan the QR code on the device sticker or poster on the webpage to add the device.

④ Enter the user name ,password, and verification code, the verification code is on the random delivery box, and then click **【Submit】** , set device name, select group, click **【Add】** .

⑤ Click **【Preview】** in the sliding menu.

⑥ Click **【+】** to enter **【Device】** interface

⑦ In **【Device】** , please choose the device you want to preview, then click **【preview】** .

⑧ You can choose different definitions in the preview interface.